

PRODUCT DESCRIPTION

The Cobrahead.A is a heavy duty, outdoor LED lighting solution. This LED lighting fixture features precision die-cast aluminum housing with powdercoat finish. Applications: Municipal Buildings, Parking Lots, Roadways and multiple outdoor lighting applications.

FEATURES

- Energy efficient LED light engine offers high lumen output as well as high efficacy
- Custom designed retrofit available to fit your existing fixtures/ housings
- Compact and optimized LED board for concentrated and powerful light distribution
- Three color temperatures available: 5000K, 4000K & 3000K
- 5 Year Warranty

PERFORMANCE RATINGS AND CERTIFICATIONS

Conforms to UL 1598, UL SUB 1598C, Certified to CSA C22.2 No. 250.0 and CSA C22.2 No. 250.13

PERFORMANCE SUMMARY

Lumens: 8800, 13300, 17800, 22144

Lumens per Watt: 128

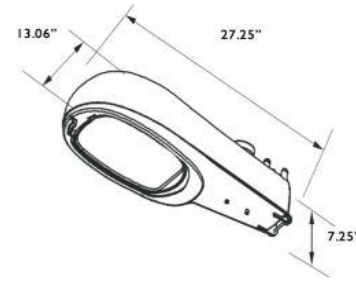
CRI-Minimum: >70

CCT: 3000K ,4000K ,5000K

Watts: 69W, 104W, 139W, 173W

Operating Environment: -40°C to 50°C

Optical Distribution: 120° Beam Angle available in Type 5, Type 4 and Type 3 distribution patterns



FIXTURE / RETROFIT KIT INFO

Finish: Standard Aluminum finish

Mounting: Accepts up to 2 1/4" Arm

Dimensions: 27.25" x 7.25" x 13.06"

Retrofit Dimensions:
13.38" x 11.50" x 2.731"

ELECTRICAL SYSTEM CHARACTERIZATIONS

Voltage: 120 - 277VAC, 50/60 Hz; 480VAC (optional, non-dimming)

Dimming: 0-10V dimming (Optional, unavailable for 480VAC input in 173W)

Power Factor: > 0.98

Total Harmonic Distortion: < 20%

WARRANTY

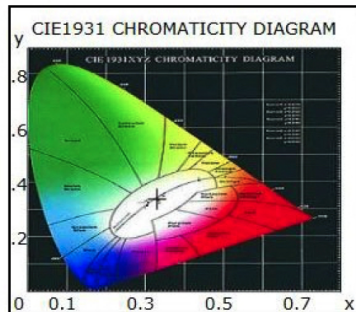
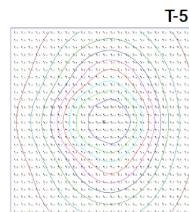
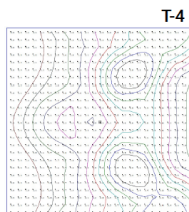
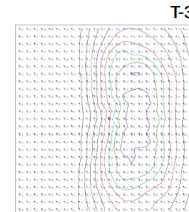
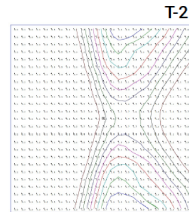
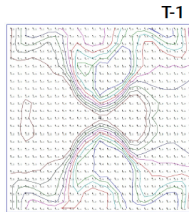
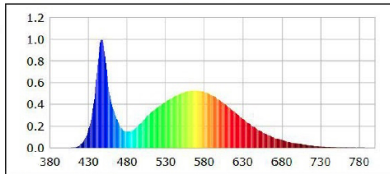
5 Year Standard Warranty Limited

Specifications are subject to change at any time without notice. All values are typical unless otherwise noted. Lumen values may vary by +/- 10%. Color temperatures may vary according to ANSIC78.377 . For more information and product support, contact GenPro Advanced Technologies at 800.465.1286 or email info@GenProTech.com

ORDERING MATRIX

Example: CBA-H105-173W--T3-50K-MT-EM-010V

Product	Board Type	Distribution	Color Temp	Voltage	Options
CBA = FULL FIXTURE CBA-RET = CBA RETROFIT	H042-69W H063-104W H084-139W H105-173W	T5 = Type 5 T4 = Type 4 T3 = Type 3	30K = 3000K 40K = 4000K 50K = 5000K	MT = 120-277VAC HV= 480VAC (non-dimming for 173W)	SRG1 = Surge Protection 120-277VAC SRG2 = Surge Protection 480VAC EM = Emergency Battery Backup 010V = 0-10V Dimming (unavailable for 480VAC input in 173W)



IES Type Distributions are generated in an open space. Light Distribution images are mounted at 10 feet.

