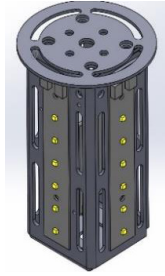
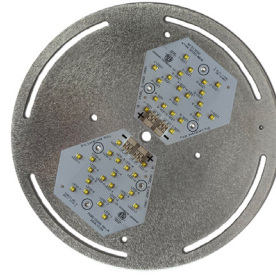


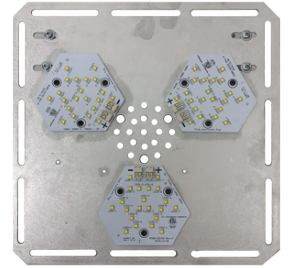
**UKIT-H021-35W**



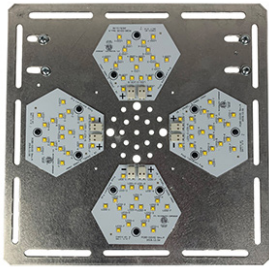
**UKIT-L024-40W**



**UKIT-H042-69W**



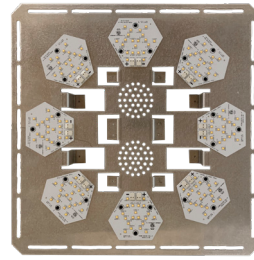
**UKIT-H063-104W**



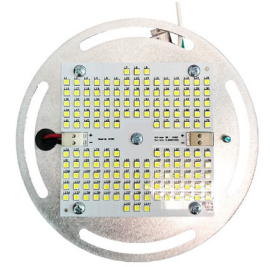
**UKIT-H084-139W**



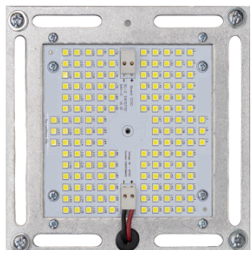
**UKIT-R140-221W**



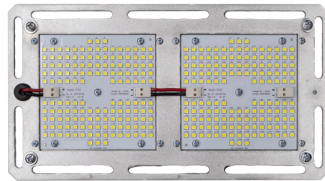
**UKIT-H168-271W**



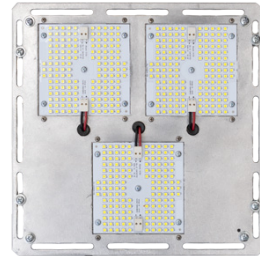
**UKIT-S150-35W-RD**



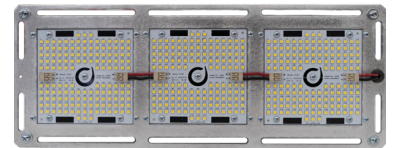
**UKIT-S150-35W-SQ**



**UKIT-S300-65W**



**UKIT-S450-98W-SQ**



**UKIT-S450-98W-RT**

## ELECTRICAL CHARACTERISTICS

INPUT VOLTAGE		120-277VAC, 50/60 Hz					
DIMMING CAPABILITY		0-10V Dimming					
POWER FACTOR		> 0.9					
TOTAL HARMONIC DISTORTION (THD)		< 20%					
LED TYPE	LUMENS	POWER	EFFICACY	CRI	COLOR TEMP	BEAM ANGLE	REPLACES
H021	4500	35W	128 Lm/W	≥70	3000K, 4000K, 5000K	120°	50W-175W
L024	4200	40W	105 Lm/W	≥70	3000K, 4000K, 5000K	120°	65W-120W
H042	8800	69W	128 Lm/W	≥70	3000K, 4000K, 5000K	120°	100W-300W
H063	13300	104W	128 Lm/W	≥70	3000K, 4000K, 5000K	120°	150W-400W
H084	17800	139W	128 Lm/W	≥70	3000K, 4000K, 5000K	120°	200W-525W
R140	28200	221W	128 Lm/W	≥70	3000K, 4000K, 5000K	120°	400W-1000W
H168	34690	271W	128 Lm/W	≥70	3000K, 4000K, 5000K	120°	500W-1200W
S150	5000	35W	143 Lm/W	≥80	3000K, 4000K, 5000K	120°	75W-220W
S300	10000	65W	154 Lm/W	≥80	3000K, 4000K, 5000K	120°	150W-350W
S450	15000	98W	153 Lm/W	≥80	3000K, 4000K, 5000K	120°	200W-450W

## MECHANICAL CHARACTERISTICS

OPERATING TEMPERATURE		-40°C to 50°C (MUST BE ENCLOSED IN A FIXTURE)					
L70 RATED LIFETIME / SERVICE LIFE		100,000 Hours					
MATERIAL / FINISH		0.1" Thick Aluminum 3003 Alloy Base / Standard Aluminum Finish					
MOUNTING		Universal Mounting Tabs included (2.50", 4.75", 7.00")					
MODEL DIMENSIONS		(L x W x H, SHAPE)					WEIGHT
UKIT-H021-35W		5.25" x 5.25" x 2.65" (Round)					1.06 lbs.
UKIT-L024-40W		4.00" Dia x 7.00" H (Corn Cob)					4.00 lbs.
UKIT-H042-69W		9.00" x 9.00" x 2.65" (Round)					1.62 lbs.
UKIT-H063-104W		11.00" x 11.00" x 2.65" (Square)					3.86 lbs.
UKIT-H084-139W		11.00" x 11.00" x 2.65" (Square)					3.94 lbs.
UKIT-R140-221W		12.75" x 15.5" x 2.72" (Rectangular)					5.73 lbs.
UKIT-H168-271W		20.00" x 20.00" x 3.21" (Square)					11.91 lbs.
UKIT-S150-35W		5.25" x 5.25" x 4.42" (Square), 6.25" Dia. x 4.42" H (Round)					2.40 lbs.
UKIT-S300-65W		10" x 5.5" x 4.15" (Rectangular)					4.20 lbs.
UKIT-S450-98W		10" x 10" x 4.15" (Square), 14" x 5.50" x 4.15" (Rectangular)					6.20 lbs.

### PRODUCT CERTIFICATIONS AND RATINGS

#### ECONOMICAL RETROFIT KITS

UKIT-H021-35W	 <p>Standard for Light-Emitting Diode (Led) Retrofit Luminaire Conversion Kits [UL 1598C: 2014 Ed.1+R: 17Nov2016] Retrofit Kits For Luminaire Conversion [CSA C22.2#250.1: 2016 Ed.1]</p>	 <p>DLC Standard V5.0</p>
UKIT-L024-40W		
UKIT-H042-69W		
UKIT-H063-104W		
UKIT-H084-139W		
UKIT-R140-221W		
UKIT-H168-271W		

#### HIGH PERFORMANCE RETROFIT KITS

UKIT-S150-35W	 <p>UL 8750 - Standard for Safety for Lighting Emitting Diode (LED) Equipment for Use in Lighting Products. CSA C22.2 No. 250.13 - Light Emitting Diode (LED) Equipment for Lighting applications</p>	
UKIT-S300-65W		
UKIT-S450-98W		

### DLC LISTED RETROFITS

<b>DLC LISTING VERSION</b>	V5.0				
<b>PRIMARY USE CATEGORY</b>	Retrofit Kits for Outdoor Pole/Arm-Mounted Area and Roadway Luminaires				
<b>DLC MODEL#</b>	<b>LUMENS</b>	<b>POWER</b>	<b>EFFICACY</b>	<b>COLOR TEMP</b>	<b>CATEGORIZATION</b>
UKIT-H21-B-CW-MT-010V	3147	29.66W	106.1 Lm/W	5529K	Outdoor Retrofit Kit
UKIT-H42-B-CW-MT-010V	6147	58.95W	104.3 Lm/W	5529K	Outdoor Retrofit Kit
UKIT-063-[optional upgrades]	9869	91.68W	107.6 Lm/W	5195K	Outdoor Retrofit Kit
UKIT-084-[optional upgrades]	15001	144.30W	104.0 Lm/W	5564K	Outdoor Retrofit Kit
UKIT-140-[optional upgrades]	24790	231.60W	107.0 Lm/W	4932K	Outdoor Retrofit Kit
UKIT-168-[optional upgrades]	33920	291.00W	116.6 Lm/W	5630K	Outdoor Retrofit Kit

### QUALITY ASSURANCE AND WARRANTY

GenPro Advanced Technologies conducts Dielectric Voltage Withstand Test, Grounding Continuity Test, Ambient Temperature Performance Tests on all products according to Intertek and UL safety standards



## ORDERING MATRIX

Example: UKIT-S150-35W-50K-SQ-E26

### ECONOMICAL RETROFIT KITS

MODEL	COLOR TEMPERATURE	OPTIONS
UKIT-H021-35W	30K = 3000K 40K = 4000K 50K = 5000K	
UKIT-L024-40W		
UKIT-H042-69W		
UKIT-H063-104W		
UKIT-H084-139W		
UKIT-R140-221W		
UKIT-H168-271W		

### HIGH PERFORMANCE RETROFIT KITS

MODEL	COLOR TEMPERATURE	OPTIONS
UKIT-S150-35W	30K = 3000K 40K = 4000K 50K = 5000K	SQ = Square RD = Round E26 = Edison Base for Bulbs
UKIT-S300-65W		
UKIT-S450-98W		SQ = Square RT = Rectangular

## WIRE DIAGRAM

Wiring Diagram of MT (120VAC-277VAC) Fixtures for different AC Power Supplies

